



Wingham Primary School

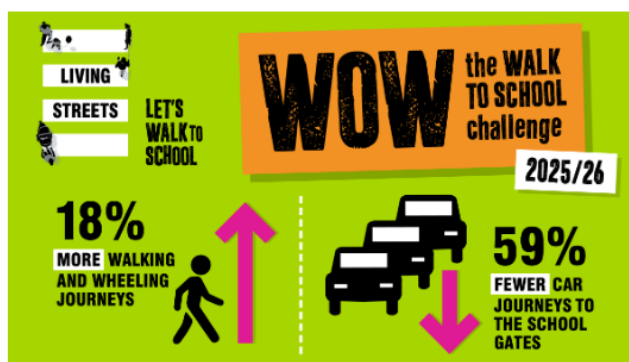
W/B 8th September 2025



A message from the Head of School to Parents...



Well done to all our new pupils in Reception and throughout the school. We hope you will have fun with your learning here!



Starting next week...

Walk to school (park and stride) 1 x week

**See letter emailed on Friday 5th Sept for further information and how the children can earn their badges.

Information and reminders

- Clubs start on Monday 8th September. Collection from school office entrance at 4.15pm
- Please name jumpers, cardigans and hoodies (clothing that is taken off)
- KS2 children can bring in fruit/ veg for their AM breaktimes. Fruit is provided for Reception and Year 1 and Year 2 children
- Please familiarise yourself with the parking action plan **See letter emailed on Friday 5th Sept
- **Reception families:** Due to changes in Early Years guidance please ensure any small food in packed lunches, that may be a choking hazard (e.g. grapes or cherry tomatoes), are cut into safe sizes

Key Dates

W.B 8th September

Meet the teacher—In the school library

Monday—Year 4

Tuesday—Year 6

Wednesday—Year 5

Friday 12th—School Photographs—Individual and Class

Friday 19th—Jeans for Genes Day

W.B 22nd—Democracy Week and pupil voice

Friday 26th—Harvest Festival

W.B 13th October

Tuesday 14th—Year 6 assembly

Friday 17th—Show Racism the Red card

Friday 17th—End of Term—3.10/3.20 finish



HOW TO GET INVOLVED

THE BEST WAY TO FIND OUT HOW TO GET INVOLVED WITH ASH RFC IS BY REACHING OUT TO US VIA SOCIAL MEDIA OR BY EMAIL!

ashrugbyfc@gmail.com | [f](#) [i](#) [@](#) [x](#)
ashrugbyclub.co.uk

Mini Rugby

Girls and boys from 5yrs